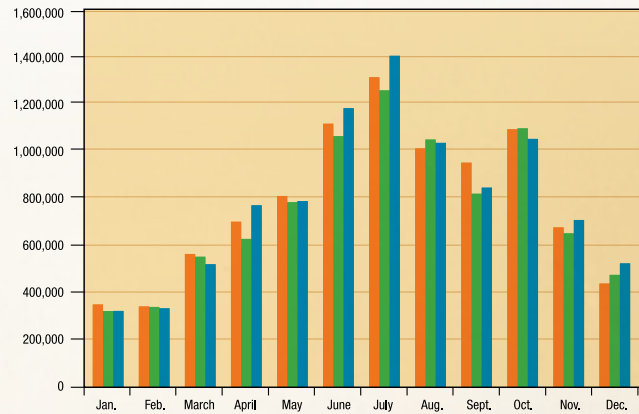


Great Smoky Mountains National Park

Great Smoky Mountains National Park is the nation's most visited national park with more than twice the visitation of second most visited park, Grand Canyon National Park. Annual visitation to Great Smoky Mountains National Park has been very steady for the last decade. In 2009, while less people came to the area as a whole, 5 percent more people visited the Park than in 2008.



2009 GREAT SMOKY MOUNTAINS VISITATION

Month	Visitor Count	% of Change
January	323,614	0
February	334,515	-2
March	521,140	-6
April	770,858	23
May	788,974	1
June	1,181,938	11
July	1,404,034	12
August	1,035,277	-1
September	845,655	3
October	1,052,137	-4
November	708,797	9
December	524,771	10
Total	9,491,710	5

2007 GREAT SMOKY MOUNTAINS VISITATION

Month	Visitor Count	% of Change
January	350,818	-4
February	342,540	3
March	564,878	1
April	701,353	-3
May	810,438	11
June	1,116,371	0
July	1,313,210	3
August	1,011,693	10
September	951,432	2
October	1,092,798	-3
November	677,203	-18
December	439,519	-12
Total	9,372,253	1

2008 GREAT SMOKY MOUNTAINS VISITATION

Month	Visitor Count	% of Change
January	322,865	-8
February	340,558	-1
March	553,078	-2
April	628,593	-10
May	783,847	-3
June	1,063,589	-5
July	1,257,396	-4
August	1,049,206	4
September	819,816	-14
October	1,096,711	0
November	652,023	-4
December	476,328	8
Total	9,044,010	-4

PRIOR YEARS' GSMNP VISITATION

Month	Visitor Count	% of Change
1990	8,151,769	N/A
1991	8,654,459	6
1992	8,931,690	3
1993	9,282,848	4
1994	8,628,174	-7
1995	9,080,422	5
1996	9,265,670	2
1997	10,010,074	8
1998	9,989,396	0
1999	10,283,600	3
2000	10,175,816	-1
2001	9,197,679	-10
2002	9,316,416	1
2003	9,366,845	1
2004	9,167,044	-2
2005	9,192,477	0
2006	9,416,734	2