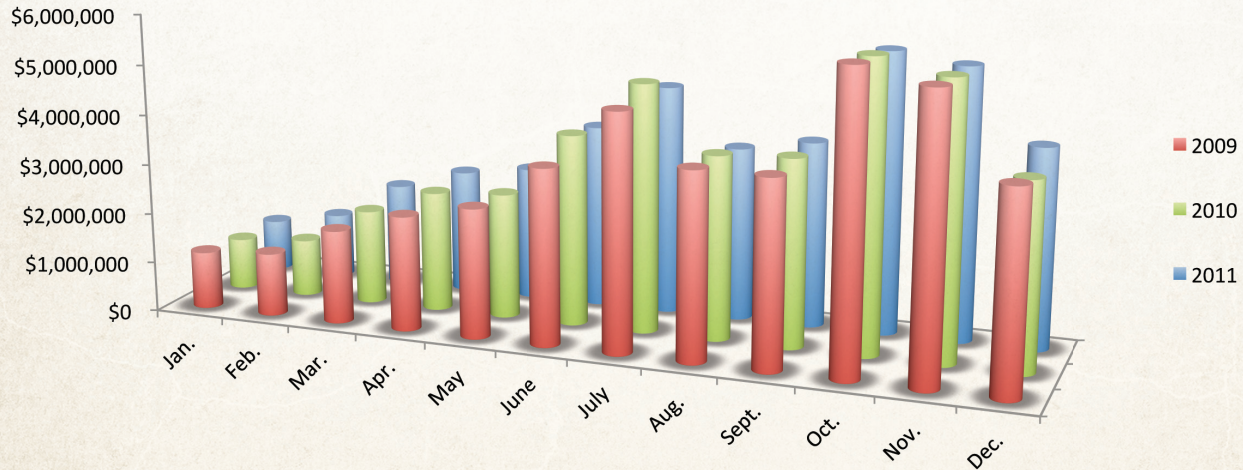


# Craft, Gift & Specialty Revenue

Many visitors to the area are looking for a unique shopping experience, and many retail stores offer specialty items celebrating the craftsmanship and heritage of the area. History demonstrates the success of this sector often parallels the retail and outlet sectors.



## 2011 CRAFT, GIFT & SPECIALTY REVENUE

Month	Gross Business	% of Change
January	\$1,028,689	1
February	\$1,296,702	14
March	\$2,058,102	9
April	\$2,475,532	3
May	\$2,667,995	7
June	\$3,650,354	-4
July	\$4,566,926	-7
August	\$3,461,995	-6
September	\$3,701,510	-1
October	\$5,592,281	-3
November	\$5,402,802	-1
December	\$3,977,787	7
Total	\$39,880,675	0

## 2010 CRAFT, GIFT & SPECIALTY REVENUE

Month	Gross Business	% of Change
January	\$1,022,703	-11
February	\$1,141,327	-10
March	\$1,892,057	1
April	\$2,403,058	5
May	\$2,504,791	-3
June	\$3,814,614	9
July	\$4,934,330	5
August	\$3,664,217	-2
September	\$3,737,067	0
October	\$5,767,150	-2
November	\$5,481,144	-2
December	\$3,718,065	-6
Total	\$40,080,523	-1

## 2009 CRAFT, GIFT & SPECIALTY REVENUE

Month	Gross Business	% of Change
January	\$1,146,100	-17
February	\$1,261,215	-20
March	\$1,871,500	-17
April	\$2,298,273	-6
May	\$2,594,782	-8
June	\$3,514,920	-15
July	\$4,713,126	-11
August	\$3,741,109	-8
September	\$3,727,145	0
October	\$5,884,353	4
November	\$5,588,646	3
December	\$3,960,915	2
Total	\$40,302,084	-6

## PRIOR YEARS' CRAFT, GIFT & SPECIALTY REVENUE

Year	Gross Business	% of Change
1990	\$21,939,894	34
1991	\$25,832,707	18
1992	\$30,871,605	20
1993	\$32,988,929	7
1994	\$36,627,014	11
1995	\$39,385,054	8
1996	\$37,567,035	-5
1997	\$40,735,443	8
1998	\$41,780,560	3
1999	\$37,794,566	-10
2000	\$39,031,968	3
2001	\$39,034,991	0
2002	\$39,531,111	1
2003	\$37,789,743	-4
2004	\$42,098,387	11
2005	\$53,528,936	11
2006	\$54,881,007	3
2007	\$48,888,033	-11
2008	\$42,758,856	-13